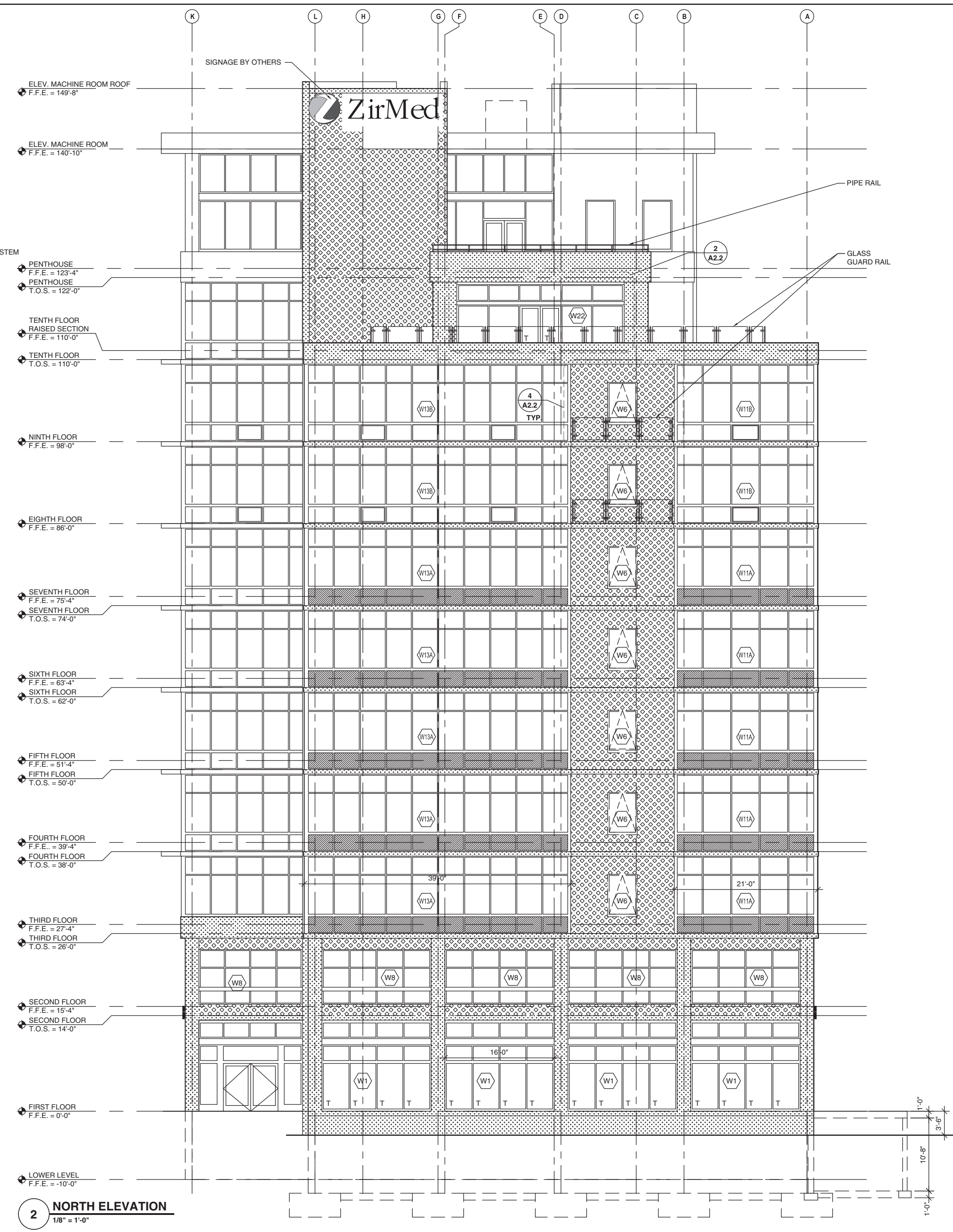


1 NORTH ELEVATION (BEYOND)  
1/8" = 1'-0"



2 NORTH ELEVATION  
1/8" = 1'-0"

Date	17 SEPT 2007
Project	GATEWAY TOWERS
Drawn	DS
Checked	DF
Revisions	
1	17 OCT 2007
2	15 FEBRUARY 2008
3	18 JULY 2008

COPYRIGHT © 2007